

The Viper Framework is your foundation of single source and all source applications...Ready Now! Architected for the future!

Viper software integration platform seamlessly integrates diverse applications, services, and data sources into a unified collaborative system. Viper enables a collaborative work environment, allowing analysts to seamlessly work together from multiple workstations. The platform creates an integrated suite of analysis tools, allowing operational ease of use with minimized training.

### Why Viper?

- Supports asynchronous data access to multiple, local and remote data sources (federated search).
- Supports collaborative visual and geospatial analysis.
- Includes several basic UI components for building multi-INT applications (e.g. 2D Map).
- Viper based systems can be extended, augmented, and reconfigured without rebuilding the system or modifying existing system components.
- Runs on diverse hardware platforms — laptops to servers.
- Easily integrates with local and remote enterprise services.

# Viper Key Features

## Solution Framework

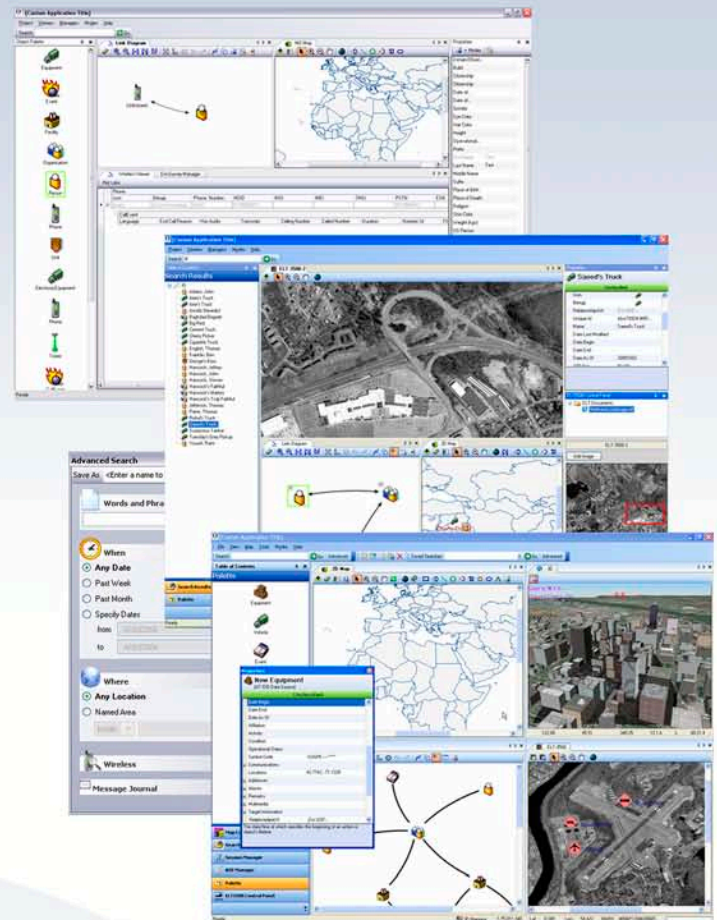
- An object oriented execution environment for integrating and discovering components to form a Windows application.
- Provides basic components and mechanisms for connecting them together and defining their interaction.
  - Easy to use
  - Fast to implement

## Included Components

- Project Management
- Properties Editor
- Preferences Editor
- AOI Manager
- Search
- Search Results
- Table of Contents
- Session Manager
- New Entities Palette
- Map Contents Directory
- Video Player
- 2D MapObjects Map
- 3D InterScope Map

## Other Available Components

- |                          |                              |
|--------------------------|------------------------------|
| - Link Analysis          | - Unified Grid – Collection  |
| - Network Status         | - Wireless Grid – Collection |
| - Data Import/Export     | - GPR Grid – Collection      |
| - Imagery Viewer         | - DF Network                 |
| - Gist & Transcription   | - CollectionClients          |
| - Wireless Viewer        | - Sensor Manager             |
| - Geo-Location Viewer    | - Admin Manager              |
| - Environmental Survey   | - SSC Collection client      |
| - Reference Data Browser | - Web client                 |
| - Nexidia Data Adapter   | - Grid View                  |



## Collaborative Framework

- An event-based service integration framework — Enterprise Service Bus.
- Systems are composed of Viper-compliant applications and services that interact via the Collaboration Framework.
- Viper clients publish/subscribe events, objects and interfaces.
- Collaborate locally or across a network.
- Customizable display configuration per user or role.

